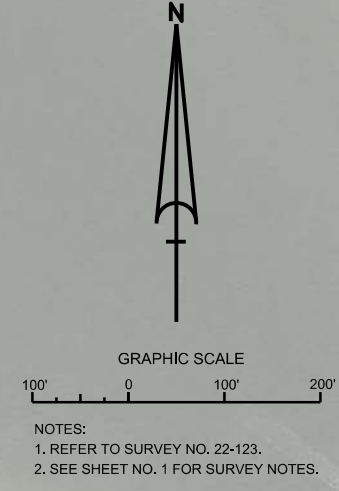
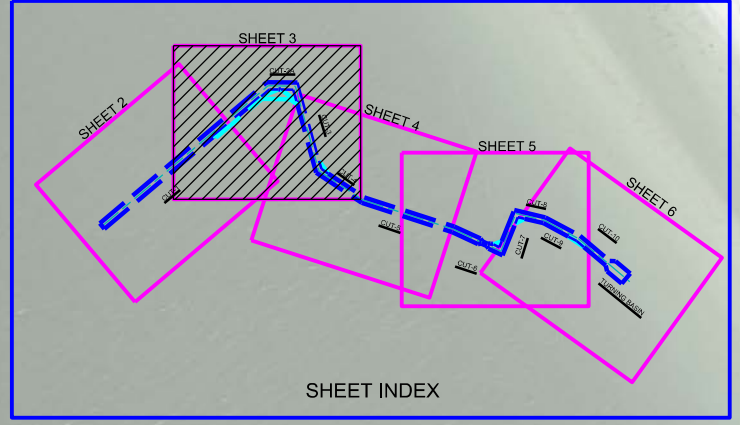


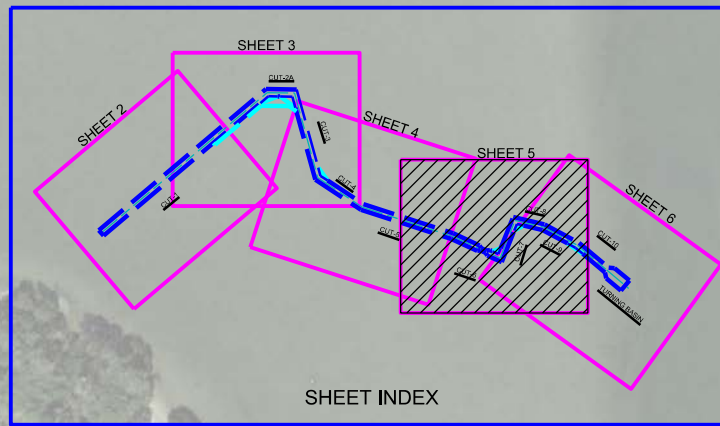
MAP LABEL	AIDS TO NAVIGATION	PLANE COORDINATES		LATITUDE	LONGITUDE
		X	Y		
R4	NUN BUOY-4 (05/22)	666.180	774.843	28°27'55.38"	81°58'09.50"
G6	LT BUOY-5 (05/22)	666.117	775.839	28°28'00.29"	81°58'10.49"
R6	DBN-5 (05/22)	666.692	775.036	28°27'57.6"	81°58'04.16"
G7	LT BUOY-7 (05/22)	666.812	775.378	28°28'00.68"	81°58'02.84"
R8	DBN-8 (05/22)	667.074	775.148	28°27'58.40"	81°58'00.00"
G9	LT-9 (05/22)	667.489	775.856	28°28'00.26"	81°57'55.99"
R10	NUN BUOY-10 (05/22)	667.426	774.822	28°27'55.17"	81°57'56.05"
G11	DBN-11 (05/22)	667.728	774.850	28°27'50.49"	81°57'52.76"
R12	LT-12 (05/22)	667.645	773.916	28°27'48.20"	81°57'53.68"
NO WAKE	SIGN (05/22)	667.195	774.866	28°27'55.90"	81°57'58.62"












MAP LABEL	AIDS TO NAVIGATION	PLANE COORDINATES		LATITUDE	LONGITUDE
		X	Y		
G*17	DBN-17 (05/22)	670.691	772.419	26°27'31.36"	81°57'20.17"
R*18	DBN-18 (05/22)	671.853	771.922	26°27'26.43"	81°57'07.39"
R*20	DBN-20 (05/22)	671.979	772.264	26°27'29.85"	81°57'05.99"
R*22	DBN-22 (05/22)	672.167	772.431	26°27'31.47"	81°57'03.92"
R*24	DBN-24 (05/22)	672.574	772.322	26°27'30.39"	81°56'59.45"



US Army Corps of Engineers  
Jacksonville District

**SAFETY ON THIS JOB DEPENDS ON YOU**

---

DEPARTMENT OF THE ARMY  
JACKSONVILLE DISTRICT, CORPS OF ENGINEERS  
JACKSONVILLE, FLORIDA

---

Drawn by: GHR  
Checked by: GHR

---

Designed by: WRM  
Checked by: WRM

---

22-123A-HARBOR-DGN  
22-123A-CONV11-00N  
22-123A-CONV11-00N  
FT MYERS BEACH HARBOR-CANAL-DGN  
22-123A-BS-BRIDG-DGN  
Reference: 22-123A-HARBOR-DGN

---

**HYDROGRAPHIC EXAM SURVEY FY22  
11 & 12-FOOT PROJECT**

---

PLAN

---

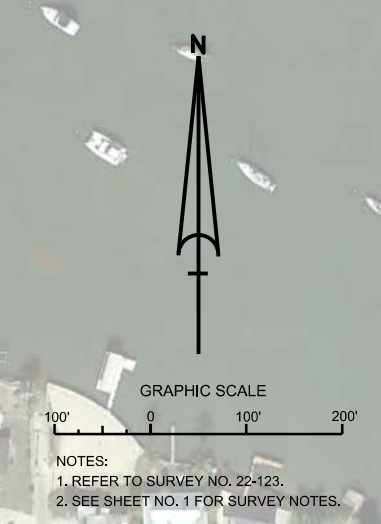
Scale: AS SHOWN

---

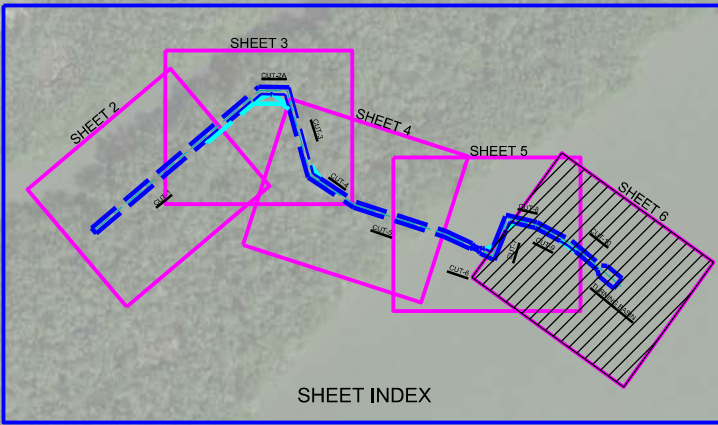
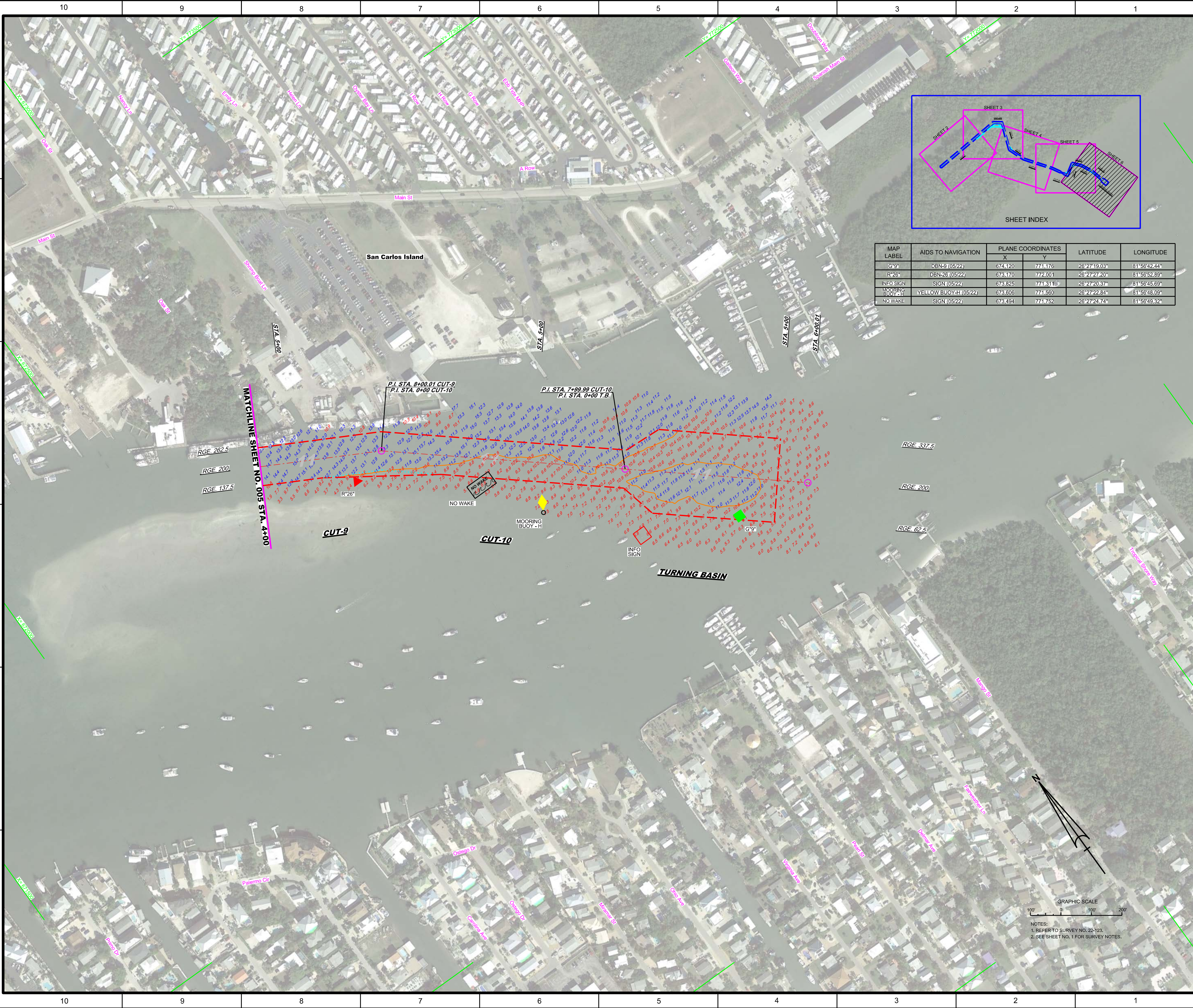
Drawing no.  
**5**

---


SHEET 05 OF 06







MAP LABEL	AIDS TO NAVIGATION	PLANE COORDINATES		LATITUDE	LONGITUDE
		X	Y		
G <sup>9</sup>	DBN-9 (0522)	674.120	774.176	26°27'19.03"	81°56'42.44"
R <sup>26</sup>	DBN-26 (0522)	673.470	772.001	26°27'27.20"	81°56'52.89"
INFO SIGN	SIGN (0522)	673.825	774.311	26°27'20.37"	81°56'45.69"
MOORING BUOY -H	YELLOW BUOY-H (0522)	673.606	774.560	26°27'22.84"	81°56'48.09"
NO WAKE	SIGN (0522)	673.494	774.752	26°27'23.74"	81°56'49.32"



US Army Corps of Engineers  
Jacksonville District  
SAFETY ON THIS JOB  
DEPENDS ON YOU

---

DEPARTMENT OF THE ARMY  
JACKSONVILLE DISTRICT, CORPS OF ENGINEERS  
JACKSONVILLE, FLORIDA

---

Drawn by: GHR  
Checked by: GHR  
Designed by: WRM  
DWG No: WRM  
File No: WRM  
Date: MAY 2022

---

22-123A-CON-1100N  
22-123A-NAV-100N  
22-123A-SOIL-C10-18-DON  
FT MYERS BEACH HARBOR-CANAL-NGMCOF-DON  
22-123A-BS-BRIDG-DON  
Reference files:  
22-123A-H000-DON

---

**HYDROGRAPHIC EXAM SURVEY FY22**  
**11 & 12-FOOT PROJECT**  
STA. 4+00 THRU STA 9+00 TURNING BASIN  
**PLAN**

---

Scale: AS SHOWN  
Drawing no. **6**  
SHEET 06 OF 06